

Wishing a happy, peaceful and safe Christmas and New Year to our readers, advertisers, contributors and volunteers

Over 2,350 copies distributed free in Linton, Hildersham, Hadstock & Bartlow

THE LINTON NEWS

www.thelintonnews.co.uk, email editor.linton.news@gmail.com

December 2020
Vol. 34 N°9
Publication date
Monday 7th December

E & E PLUMRIDGE
Design & Print
41 High Street
Linton
01223 891407

Village dogs at risk this Christmas

AN unexpected and cruel side effect of the pandemic has been the steep rise in dog thefts in the UK. Increasing numbers of people working from home means that the demand for pedigree dogs has skyrocketed, driving prices up and creating a black market for stolen animals. Sadly, it seems that villages are bearing the brunt of this new crime wave. The fact that dogs are often kept in less secure conditions than in cities is driving criminals to target rural areas and quiet villages in particular. Worryingly, the situation is predicted to worsen as Christmas approaches and the canine gift market heats up. The Linton News spoke to Sue Ingram, owner of Take the Lead, a professional pet sitting and dog walking service that operates out of the village. We asked her whether any particular breeds were more at risk than others. 'All dogs are vulnerable but the most

sought-after are the gundog breeds including Labradors, Spaniels and Cockapoos'. Sue speculated that most dogs are sold on, but that some may be kept for breeding purposes to provide more puppies for sale. When asked what dog owners could do to enhance the safety of their pets, Sue had

chances of your dog being returned to you if stolen. Never leave your dog unattended in your garden, and if it's outside in a kennel make sure it's close to the house and consider CCTV. Make sure gates are locked and check fencing after high winds to ensure it is still secure. Whilst out walking your dog, vary your route as thieves may be monitoring paths or parks for regular visitors. Beware social media – you may be giving away your location when sharing photos of pets. In the worst happens and your dog is stolen, inform your vet and microchip company straight away, put posters up and report the theft on as many missing dog websites/fb pages as possible. Sue can be contacted for more information or advice via her website www.take-the-lead.co.uk or 892006



Team Take the Lead: Sue Ingram (right) with her assistant Sue Parker and employees Willow and Teal.

some tips. Consider including neutered on the collar tag – neutered dogs cannot be bred from. Make sure your dog is microchipped and that their details are up to date on the database. Take photos of your dog from different angles, highlighting any distinguishing marks such as scars or spots – this may increase the

Linton News Team
Photo: Roger Lapwood



The news in pictures: A frozen tree at the top of Rivey Hill during the 'Beast from the East.' Will things be quite as chilly this winter?
Photo: George Thomas for Linton News Team

A virtual tour of the past

WE have finished our online virtual tour of our excavation off Horseheath Road in Linton, generated from drone footage we took of the site. It is hosted on our account on the website Sketchfab here: <https://skfb.ly/6VQCP>. People can move around and zoom in and out of the 3D



Point your phone's camera at the image above to go straight to the tour

model, and click on the numbered points to read more information about what was found. The photographs embedded in the tour have also been uploaded to our Flickr account so people can see larger versions of the images: [flic.kr/s/aHsmRDgb77](https://www.flickr.com/photos/ahsmrdgb77/). The model is best explored on full-screen on a desktop computer. Let me know if you have any questions or require any further information. We hope that the virtual tour helps to engage and inform local residents in our archaeological findings at the site.

Clemency Cooper
Oxford Archeology East

Santa announces extension of parade route

LINTON Firefighters are aiming to bring Father Christmas and some much needed festive cheer to Linton and two nearby villages in December, while also raising funds for the Firefighters Charity and schools within the villages. As we enter our fifth year of Christmas events, we are of course unable to hold our end of year Disco. However, we are pleased to announce we are taking Father Christmas to Abington and Balsham, in addition to his traditional annual visit around Linton. Operational calls allowing, we will begin this year's tours on Friday 18th December in Abington, aiming to begin at the top of the High Street (Pampisford Road end) at 17:30. Any money raised on the night will be split evenly between the Firefighters Charity and Great Abington Primary School. Saturday 19th December will see us going to Balsham from approximately 17:30, starting on the High Street near The Brambles, with any money raised again being split evenly between our charity and The Meadows Primary School. The visits to Linton will take place on Monday

21st and Tuesday 22nd, on both nights starting from the Fire station at 17:30 following the routes as published. The totals over these two nights will be split with 25% going to the Linton C of E Infant School, 25% to the Linton Heights and the remaining 50% to our charity. The event is open to all so please come and see Father Christmas in the fire Engine as we pass through the villages. Unfortunately if current guidelines change from the time of writing this, then the event may need to be cancelled, and we will update village social media platforms, or keep in contact by following us on our Facebook page – Linton Community Fire & Rescue Station where our progress on the nights will also be posted. As with current guidelines, we ask that you keep two metres from other families to ensure safety of others. We look forward to seeing you.

Seb Croot
Crew Commander
Article and Photos



Santa and his assistants pause for a photo

.....and a call to arms

YOUR Fire station needs you! Are you aged 18 or over? Do you have a good level of all round fitness? Do you live or work within five minutes travelling time of an on-call fire station? Are you able to commit to providing a professional service to everyone in the community? If the answer is yes then a career at your village fire Station is perfect for you. The firefighters at Linton are not based at the fire station. We carry a pager and respond to emergencies as they happen. We receive an annual wage to reflect the time that we commit to being available with additional payments for attending incidents and drill nights. We are men and women who may have other jobs and are able to provide evening, day-time or weekend cover. When we are on-call we stay within a five-minute travel time of the Fire station. We may be at home, out in our local community, working for ourselves or a nearby company that is happy to release us. In Cambridgeshire we make up 56% of the workforce and Linton fire Station is recruiting now. We currently have 10 On-Call firefighters who can respond to the Fire Station when available and called upon.

Seb Croot



Harries' harriers help her hefty charity haul

DECEMBER has arrived and I am pleased to report that anticipation around the festive period is building as normal! Obviously, we aren't able to hold our normal Christmas Production, which children, parents and staff all enjoy, but we have plenty of other ideas to keep the mystery and magic that surrounds Christmas alive for the children. You may have seen us out running around Camping Close at the end of October. This was part of a fundraising event to raise funds for the school and the NSPCC. I was meant to run the London Marathon in April on behalf of the NSPCC but instead ran the equivalent of a marathon on the day, encouraged by the support of the children, staff, parents and the wider community. As a school, we have been overwhelmed by the amount we have managed to raise;



Kelly and her team of pint sized pacemakers

£2196 at the time of writing! Thank you so much to everyone who supported us. I would like to thank the Linton Community Help Team, who have worked to assist our families through the pandemic in which we currently find ourselves, along with our PTFA and have been just fantastic! These are strange times we are in, but I feel the

strength and coming together of our community has really shone through. All that is left for me to say now, is on behalf of all the staff here, we wish you a very Merry Christmas and a restful New Year.

Kelly Harries
Photo: Linton Infant School

Wine, beer and good cheer

HOW would you feel about drinking something called Gaspig Goose, Mosquito or Nighthawker? These are just some of the local beers Adrian Watts stocks in his shop Case Solved. But Adrian's interest is primarily in wine. This began when he got a job at Oddbins in the 70s. After working there for 10 years he moved on to small importers and spent three years working as a distri-

bution manager for a specialist in organic wine. In 2012 he established Case Solved in Manchester as a home delivery service (hence the name), also selling via local markets and food fairs before opening his shop in 2015 in the Gallery Above on Linton High Street. Adrian has a great awareness of environmental issues which means that he stocks many organic wines, despite their be-

ing more labour intensive to produce: hand picking, vineyard management etc. He has travelled the world to further his knowledge and now uses a network of small importers to obtain his stock.

There is a select range of malt whiskies, gin and other spirits, and Adrian has tasted everything he sells, although not all at once he assures me.

If you are looking for something for a special occasion or just something to drink in front of the TV, this is the place to come. Adrian has now moved downstairs and to the rear of the premises. You can contact Case Solved on Facebook or on their website casesolvedwines.co.uk. Alternatively, email them on buywine@casesolvedwines.co.uk



Adrian in his well stocked shop

Sarah Hurcum

Once upon a time....

ONE cold and snowy day some years ago, a four-year-old Linton boy and his mum were enjoying an outing to Hadstock Hill. Of course they built a snowman, but when it was time to go the boy was reluctant to leave the snowman behind. When he got home he wrote a story about what happened next, and this became the inspiration for a book his mother has now written and which was published in September. The book, *Rupert's Snowman*, by Phillippa Warden is a delightful story of home, family, kindness and friendship – qualities which we particularly need at this difficult time. It is beautifully illustrated and suitable for children up to around eight years old. The book will be available from the Flower Boutique in the village as well as all usual bookshops. And if you buy online from <https://bookshop.org/Rupert's-Snowman> you will be supporting local bookshops with your purchase rather than Amazon.



Phillippa's website www.phillipwarden-books.com has some free downloadable festive activities for children which you may find useful in the run up to Christmas. It is lovely to think that we have such home-grown talent in the village, and based on the empathy shown in the story I'm sure Rupert must be very proud of his mum (and looking forward to a share of the royalties!).

Jackie Latham

Granta school gives, and receives

NOVEMBER has been a wonderful month for us here at Granta. Despite the pressures of another lockdown, students and staff have thoroughly enjoyed celebrating Diwali, learning about Remembrance Day and fundraising for Children in Need. Pupil wellbeing is at the core of our provision and classes have taken part in Five to Thrive activities as part of the Children in Need focus on wellbeing through engagement and exercise. Friday 13th November saw staff and students come into school in their pyjamas or onesies and we are delighted to announce that we have raised over £600 for this worthwhile charity. November has also seen the addition of some new IT equipment to ensure that our classrooms are fully equipped to engage and excite our students. An enormous thank you to Crofton Engineering for

their generous donation of two new interactive touchscreens! These will make such a difference in supporting our pupils to access a variety of learning opportunities.

Ruchi Datta
Headteacher



Orca class during children in need

Don't forget to tell our advertisers where you found them!

PLUMBLINE

PLUMBING AND HEATING ENGINEER
PROFESSIONAL DOMESTIC PLUMBING SERVICE

Including Property Maintenance
Painting: Tiling: Plastering: Carpentry

Call John on

01223 893903

Supcik@talktalk.net

Fully Qualified and Insured

Friendly and Reliable Service No Job Too Small



The Linton Laundry

Shirt pressing
Ironing
Laundry
Eco friendly detergents
Wet Cleaning
Door to door service

Call us on 07894 197805
info@lintonlaundry.co.uk
lintonlaundry.co.uk



Qualified Body Control Pilates Teacher.

Classes and 1-1 sessions
Specialising in older and less able clients.

Contact Rachel 07905105081
Rachel@zigzagpilates.co.uk
www.zigzagpilates.co.uk

BODY DESIGN PILATES

Pilates Classes
Linton & Horseheath

su@bodydesignpilates.co.uk
bodydesignpilates.co.uk

Su Matthews
REPS LEVEL 4 PILATES TEACHER
& BACK4GOOD PRACTITIONER

07986 692 334



Linton Cabs

Airports / Train Stations / Local Travel

07958657300

lintoncabs@btinternet.com

kalma

Reiki & Crystal Healing
including children and animals
(Linton - You Beauty Cambridge)

Community Reiki Healing Clinic
(Linton Village Hall)

Relaxation Classes
(Linton, Sawston, Stapleford, Arthur Rank)

Faye@KalmaReiki.co.uk
07815 608897
@Kalma_Reiki
f KalmaReiki

SHINE

WINDOW
CLEANING

TEL. 01223 893529
MOB. 07703 518882

FREE QUOTATIONS

FULL PUBLIC LIABILITY
INSURANCE

SHINWINDOWCLEANINGSERVICES@GMAIL.COM

THE DOG & DUCK
TEL: 01223 890349
WHATSAPP: 07932993433
MERRY CHRISTMAS! WE'RE OPEN!

COME & ENJOY YOURSELVES IN OUR OUTDOOR HEATED MARQUEE OR OUTDOOR HUTS
TAKEAWAY FOOD AVAILABLE TO ORDER VIA OUR ONLINE STORE
THE SHED SHOP IS STILL OPEN, OFFERING DAY TO DAY ESSENTIALS, PLUS A FEW TREATS FOR CHRISTMAS & NEW YEAR
POP IN OR ORDER ON OUR ONLINE STORE FOR COLLECTION OR DELIVERY.
WWW.DOGDUCKSHOP.COM
THANK YOU SO MUCH FOR ALL YOUR SUPPORT IN 2020
ROLL ON 2021
CHECK OUT OUR WEBSITE FOR NEWS, UPDATES & MENUS.
WWW.DOGANDDUCK-LINTON.CO.UK

Christmas services at St Mary's

AS I write, it's unclear whether we'll be able to hold Christmas services in our lovely church building. If we can, we plan to 'double-up' on some of them in order to accommodate more people whilst maintaining social distancing, but we shall still have to ask you to book your place in advance, as seating is very restricted. We do know how much people value coming to the church itself at Christmas, so we really hope this will be possible. If we can't hold worship in the building, we'll be offering it on-line. Details of how to join us will be on our website (stmaryslinton.org.uk), our Facebook page (stmaryslinton), and the CoFE website 'A Church Near You.'

One way or another, our schedule of Christmas services will include: A Carol Service on 20th December, a Crib/Christingle service at 4 pm on Christmas Eve, a 'Midnight' service (possibly at 10 pm and 11.15 pm), and services on Christmas Day at 8 am, with possibly two All Age services at 10 and 11.15 am.

Please look out for notices around the village, as well as looking on the website, Facebook page or ACNY for more information nearer the time. Together, as this difficult year draws to a close, let's receive good tidings of 'Comfort and Joy' at Christmas!

Maggie Guite (Rector of St Mary's)
rector@stmaryslinton.org.uk

Scouts seek inspiration

SCOUTING has returned online, for now, and will probably remain so until the New Year. However we are very much an active section, and have children starting in their new age groups already. Huge thanks to Barry, Stewart, and their assistants, for the Herculean effort of returning scouting to the children. We are very keen to keep Linton 1st Scouts active, and would appreciate any help, as well as opportunities to safely have adventurous experiences, as we head optimistically into 2021. Previous years have seen experiences such as visits to a Formula 1 workshop, hikes to Macdonalds and visits from local people who have exciting stories and experiences to share. Please contact me with any ideas or offers.

Ed Groenhart
Chair-1st Linton Scouts
01223 660493

Readers write...

I SHOULD like to applaud Granta Medical Practices for their drive-by flu vaccination arrangements at Duxford airfield. It was all brilliantly organised, efficient and safe, and certainly no hold-ups or queuing whilst I was there. Staff at all levels gave up their weekends to provide this great service, and it's much appreciated. Besides flu vaccinations, the item in October's Linton News by Sandra East also drew attention to Granta Pharmacy's medicines delivery service. Here it was disappointing to see that Granta are again effectively undermining the excellent service provided by our own Village Pharmacy here in Linton - which itself has a delivery service for those unable to collect their prescriptions. I have lived in Linton for well over 40 years, during which there has been a pharmacy here. Deepa and Raj, who run the Village Pharmacy, have done so for the last 37 years, working tirelessly to keep the service running for those who need it. Many readers will remember the flood of 2001, and how several of our shops, including the chemist's, were inundated. Yet they returned, and I would like to express the appreciation of many villagers for their commitment, continuing, of course, through the current very difficult crisis. Let's celebrate our village services, and continue to support them.

Molly Warrington

- 24 hour emergency service
- Boiler breakdown and servicing
- Boiler upgrade



KA PLUMBING & HEATING

Office: 01223 890554
Mobile: 07890 576608

kaplumbingheating@hotmail.co.uk



TIM PHILLIPS & Co. Accountants

Established 1991

Independent, specialist service for:
**Small Business • Self Assessment
Personal Taxation**

Free initial consultation - no obligation
EASY, FREE PARKING

Copley Hill Business Park, Cambridge Rd., Babraham
Off A1307 between Wandlebury and Babraham

Tel: 01223 830044. www.tpaccounts.co.uk

Grant Applications invited for the Anderson Trust

THE Trustees of the Charles and Mary Anderson Benefaction would be pleased to receive applications for grants from the benefaction for distribution in 2021. The aims of the charity are as follows: To sustain the work and worship of St Mary's Church, Linton. To promote education for the benefit of those living in or resorting to Linton, in particular within the Church School. Any other charitable purpose for those living in or resorting to Linton. In 2020 eight grants were made, amounting to £9365 in total, covering varied activities

and supporting all ages across the community. Applicants need to complete the 2020 application form, which contains further details of the application process. The form is available from Gillian Powell, Chair of the Trustees, at powellg@talktalk.net or telephone 893664. Applications should be received by the deadline of Friday, February 5th 2021. The Trustees will meet in March to consider all applications.

Gillian Powell, 893664
Chair, Charles and Mary
Anderson Benefaction

Cycling rules: are you up to speed?

ANYONE visiting a bike shop around Cambridge this summer will have noticed a distinct lack of... bikes. As a nation we have been buying them at an unprecedented rate, and with no end in sight to the pandemic the trend looks set to continue. Linton is ideally situated for the enthusiastic cyclist. For a lot of people, however, the biggest turn-off for cycling is having to share the road with cars; the likeliest outcome of a contretemps between even the smallest of cars and a vulnerable cyclist is self-evident, and the use of a well-fitting helmet, at the very least, is essential. A big attraction for some about life on two wheels is riding with others in a group, exploring the countryside and chatting as you go. To this end, many people enjoy riding abreast on country roads, but are reluctant to do so as they fear holding up traffic behind them. In fact you are perfectly entitled to ride side by side, as confirmed by the highway code which only advises single file on narrow roads or around bends. It is not only legal, but proven to be safer than riding in a long line. Many drivers don't seem to know this, and a blast from the horn of an approaching vehicle is not an uncommon occurrence. But by rebuking you with their horn they are contravening rule 112 of the Highway Code, which can carry a £1,000 fine.

Linton News Team



THE LINTON NEWS Next Publication 4th January 2021
DEADLINES FOR NEWS ITEMS:
Wednesday 9th December

ITEMS FOR ADVERTISING MANAGER
Requests for adverts can be sent to:
Judith Rouse Email: adverts.linton.news@gmail.com

ITEMS FOR THE EDITOR
Should be sent to Jack Glossop
Email: editor.linton.news@gmail.com

FOR DISTRIBUTION QUERIES CONTACT:
Delivery managers: Jenny and Chris Murison, 660408, or
07905 384741 Email: delivery.linton.news@gmail.com

Call 893619 for an audio version of the Linton News.

Bin collection dates

Linton refuse collection: Mondays 7th and 21st December
Linton blue and green bin collections: Mondays 14th and
28th December (Blue bins only on 28th)

Girlguiding Linton District Autumn 2020

WHAT a term we have had here in Linton District. Our Guiding county of Cambs East has produced its annual review showcasing some of the amazing things our leaders have done with our girls. Keep a look out for a copy near you. We have dealt with lockdown again and have had many virtual meetings. Girls were encouraged to do an age related activity for children in need and remembrance was shared at home. Our Guiding light is shining brightly as we near Christmas and although we will not have the usual parties and Christmas fayres there will still be much fun to be had. Inspiration can come from many sources and it is wonderful to see our girls wave hello as they are passing. There have been night time stargazing challenges from Anglia our Girlguiding region and as usual our website is full of exciting activities, challenges

and awards to do for every age from 5-18 and beyond! Take a look at our website on www.girlguiding.org.uk/what-we-do/adventures-at-home. It is packed full of new ideas and activities. As always we are offering our full programme of adventures, with adaptations to make it accessible at home. Building skills, earning badges and awards and having time with friends. There is also a special pantomime happening in December for everyone in Guiding to see at home. Oh no there isn't! Oh yes there is! Those who were Brownies with us last year had the opportunity to have a go at making slime and custard pies.

Louisa Powell-Owens
Linton District
lintondistrict@gmail.com

 **The Crown Inn**
COVID GUIDELINES TIER 2
TABLE SERVICE from 3RD DECEMBER
Take Away service still on offer
You can use our car park
~ MERRY CHRISTMAS ~
We hope to see all our wonderful customers, new & old, in 2021. Thanks for your continued support.
Tel: 01223 891759 crownatinton.co.uk


We would like to thank all of our customers for their support during this difficult year & look forward to welcoming you back soon
Merry Christmas & a Happy New Year
High Street Linton CB21 4JT

abode
Town & Country
Linton's new Estate Agency.
Get in touch for a free valuation
sam@abodetc.co.uk
01763 259 888
0.75% Selling fee!

Pest Right Pest Control
ants bedbugs bees carpet beetle cluster flies cockroach earwigs
fleas flies foxes mice moths pigeons
rabbits rats silverfish spiders squirrels wasps
Based in Linton, call Mark or Carolyn on
01223 897982 or 0845 4682412 or 0777 620 4483 for a discreet professional insured service
RESIDENTIAL • COMMERCIAL • AGRICULTURAL • INDUSTRIAL

Linton Complementary Health Centre

2B Bartlow Road, Linton, CB21 4LY

- Acupuncture
- Shiatsu
- Massage
- Food Intolerance Testing

Telephone: 01223 891145
Email: enquiries@lintonhealth.co.uk

Robin Phillips is bringin' back the blues

IN his newly released documentary, English jazz musician and Linton resident Robin Phillips takes us on a journey that retraces the path of jazz and blues across the US.

Astride his Harley, Robin travelled from Chicago down south to New Orleans to film *Back to the Source*, which was premiered in the UK at the *Doc'n Roll* film festival in London in November.

The thinking behind Robin's road-trip was to better understand the art form to which he's dedicated his life. He wanted to get the authentic flavour of the New Orleans music scene in particular, but it ended up as "a trip following the North Migration of African Americans up the Mississippi after emancipation, with a diversion

to take in Nashville, but all in reverse," he told London Jazz News. This also fits in well with the 're-verse' theme of his latest album, aptly named *Re-Versed*, performed with his quintet.

Robin gives the many lost verses of classic jazz standards a new lease on life, 're-versing' them in a series of fresh arrangements. He performs with his Jazz ensemble on the first Sunday of every month at the Dog and Duck in Linton.

More info on *Back to the Source* can be found on www.facebook.com/backtothesourcefilm, while videos from the album and other music can be found here: www.youtube.com/repmusic

Yule Edwards



Robin on the streets of Memphis

Fishy Tales

theWI INSPIRING WOMEN
ANDY Malcolm, our speaker, is the regional organiser and fundraiser for the Fishermen's Mission, a Christian based organisation looking after the welfare and spiritual needs of some 250 active fishermen in the East Anglian region and their families, including those retired, widows and children. There are approximately 12,500 fishermen in the UK landing about 700,000 tonnes of fish every year, and it is the toughest way to make a living. 88 year old Henry (50 years at sea) struggled to cope in his little cottage until Andy and his team went in, redecorated, got new carpets, cooker and heating, and a 24 hour care package was set up with the local authority. Migrant fishermen are only allowed to come ashore for two hours a day, when they are provided with facilities to phone their families abroad. An old boy wanted his ashes scattered at sea – just outside the harbour the breeze blew them all over his widow. She said 'He got up my nose every minute of his life'. Andy gave us a quiz he called *Codswallop* – he showed names of fish, some of which were made up and some real, if we thought the fish was real we had to call out cod and if not, wallop. Andy finished with some history and trivia of fish and chips. 1.6 million fish fingers are eaten every day. In the 1600s the Portuguese first fried fish in batter. The only food not rationed during World War II was fish and chips, and it kept us going. Chelsea FC charges £60 a head for Marco Pierre White's fish and chips. The best place to eat fish and chips is at the seaside or walking home from the pub on Friday night. Andy asked us to spare a thought for our fishermen, one of whom is killed or injured every eighty days. This is the true cost of the fish we love to eat. Our next meeting will be on December 1st via Zoom but is for members only. There will be a sweet making demonstration.

Sally Proberts

Rainbow of Hope

IN light of the ever increasing concerns around mental health and well-being, Linton Heights Junior School decided to reinforce their sense of hope and community by having a 'Rainbow Day'. On Friday 23rd October, staff and children were invited to come to school dressed in RAINBOW! The aim was to celebrate our strengths and recognise that we can all face challenges and upsets, but by supporting each other, sharing our experiences and looking for the positives we can find the 'rainbow after the storm'. During the day, as well as simply feeling brightened by the colours around them, children enjoyed a variety of activities focusing on the positive messages that rainbows can bring: via art, stories, poetry and dance. All money raised went to the school's funding of new materials to support child well-being and mental health. Juliet Frost, Y5 teacher and school counsellor

Linton Community Help Team

WE had some lovely Autumn days but now the days are colder and the nights are longer some might be stuck inside and alone or struggling with heating bills. This year might be a very different Christmas, some might not see family or be able to afford presents. So, we are inviting everyone to share a little Christmas kindness. We want to show kindness to all - but especially to those who find this a difficult time, so we are offering some Christmas Treat Bags!

Here's how you can help:

1. Donate unwanted/barely used gift bags, gift tags, leftover wrapping paper and small cardboard boxes for us to put Christmas treats in. You can also donate small boxes of chocolates or bags of chocolate coins or tins of biscuits.
2. By donations to finance Christmas treats or other support. (Bank transfer to St Mary's Church Linton PCC 20-17-19, 90389277 marked 'Christmas Kindness').
3. Businesses - please contact us if you can help with non perishable treats such as tins of biscuits or non alcoholic sparkling wine.
4. Most importantly - please let us know anyone who deserves or needs a Christmas Treat. (First name only needed to begin with).

To offer help in any way, or if you, or someone you know, needs help with food, errands or shopping, or just a chat on the phone contact: lintoncommunityhelp@gmail.com or phone 01223 901132

Please note on some Christmas fliers our email address was incorrect, apologies.

Yannick@LCHT

Treats from the Jolly Trolley!

Current Linton Library opening hours:

Tuesday 10am-2pm; Thursday 2-6pm

Customer Services (regular office hours):

0345 0455225

Bus Pass application & renewal:

0345 0451367

Blue Badge application & renewal:

0345 0455204

Libraries website:

www.cambridgeshire.gov.uk/library

As we approach the end of this extraordinary year, we'd like to wish all our customers the very best for Christmas and into 2021. You have helped us keep our spirits up in challenging times, and we hope we've returned the favour. Please stay safe and well this winter and keep cheerful with some good reading.

Anna & Lindsay

Community Library Assistants

Linton Library

anna.mcmahon@cambridgeshire.gov.uk



The Library's Jolly Trolley

MALLYON & DONALDSON

Linton

Specialising in both Modern and
Traditional building methods.

Tel: 01223 891267

Mob: 07941 220868

All contracts finished to a high standard.
Reliable service. Local references available.



Cambridgeshire Family Chiropractic Centre

Bespoke massage and chiropractic care
for aches and pains
Specific techniques for pregnancy and children
15 years' experience
Call 07870568548

www.cambridgefamilychiro.co.uk

CardiacFit

Safe, effective exercise
for good heart health

Cardiac rehab. (Phase 4)
Exercise referral
1-to-1 / online

Anton Flynn
07837 065946
afbfitness.co.uk



YOU BEAUTY CAMBRIDGE

YOUR LOCAL BEAUTY SALON

Check us out at
5 Balsham Road, Linton
Cambridge CB21 4LD

youbeautycambridge.co.uk

01223 668400

LINTON VILLAGE MOTORS

(situated in Great Abington opposite Granta Park)

www.lintonvillagemotors.co.uk

Tel: 01223 830550

- MOT testing
- All makes of vehicles serviced and repaired
- Tyres at competitive prices
- courtesy car provided
- Polite and friendly staff



Mon-Fri: 8.30am-5.30pm Sat: 8.30am-12.30pm



McKenzie & Haywards Garage LTD

MOT by appointment while you wait
Servicing, Collection & Delivery Service

Unit 3 & 4, Lintech Court
The Grip Industrial Estate
Linton, Cambs
CB21 4XN

Tel : 01223 894140
Fax : 01223 890035
mhgarage@btconnect.com

PJB Maintenance

No job too small
Ground work, Patios, Floor
& Wall Tiling, Fencing, Roof
repairs, Demolition
CPSC Licence
Free Estimates

Call Peter Belsom on
Mob: 07799 183308
Tel: 01223 668475

MOPS HAIR SALON

HAIR BY JO DENNY
WOMEN | MEN | CHILDREN
CUTTING & COLOURING

41 LINTON HIGH STREET
(BEHIND BOSWELL'S BAKERY)
t: 01223 893 285



COUNTRY MATTERS

Text by Oriel O'Loughlin and illustrated by Maureen Williams



Spiders in the bath

THE first time I went on holiday with Ben, I noticed that he made a little ladder for a spider to get out of the bath, and I could hear my mum back home saying "I should hang on to that one".

Spiders provoke a spectrum of reactions from rooted to the ground terror, to obsessive fascination. You are probably somewhere in between. There are about 600 species in the world, 17 of them relatively common here in the UK, but this piece is looking at the house spider, *Tegenaria Domestica*. It has a large cousin, the giant house spider, *Eratigena Atrica*, but the characteristics are the same. They are arthropods, with 8 legs and singular eyes, the subject of countless ditties over the centuries.

Most spiders find living in houses too hot and dry, and only end up inside by accident – curiosity leads them into an open window, or a gap in the door frame, and then they can't get out. However house spiders have found a way to adapt, and opt for the darker and damper parts of the house, away from housework enthusiasts. They are very fast, scuttling across the floor in seconds. They make a vertical web with a funnel-like retreat at the

back, and wait for unsuspecting insects to pass by. In attracting flies and other insects, they provide valuable pest control services, especially in hot countries. They are around 1.6cm across, depending on how much they've eaten, and the leg span of the giants is up to an alarming 7.5cm. They have a tan coloured abdomen with a hering bone pattern. (Lockdown challenge – take a very close look).

They leave black spoor spots on sills and skirting boards, and in autumn the males become extremely active searching for females. They have what looks like long thin boxing gloves called pedipalps coming from the front of the head – used for transferring sperm to the females. Females can live for several years, and can lay up to 60 eggs. Males stay with the chosen female for many weeks, mating many times until they die and, you guessed it, they are then eaten by the female.

This year it has been so mild that there is plenty of food for them, and they are more evident. The Natural History Museum has an App called *Spider in Da House* to help you identify them. Hours of fun.



Phone boxes with the Hundred Parishes Society

WITH Christmas just around the corner we are thinking of calling friends and family but not, I suspect, from a red telephone box. In 1924 the Royal Fine Art Commission invited three architects to submit designs for new telephone kiosks. The winner was Sir Giles Gilbert Scott, who also designed Liverpool Cathedral, where he is buried. Scott was at the time a trustee of Sir John Soane's Museum and he topped his kiosk with a dome, similar to that on the mausoleum Soane had designed for himself. It was produced in cast iron as GPO model K2, replacing the K1 concrete kiosk.

Later designs had a similar appearance. The most common, the somewhat smaller K6, was introduced for King George V's silver jubilee in 1935. The colour red was chosen to make them easy to spot, although Scott had suggested silver. These robust and iconic survivors of the 20th century, found in almost every town and village, are worth preserving. At the last count, 51 within the Hundred Parishes had been listed. Most red phone boxes have now been decommissioned, although a few, like the one in Anstey, still operate as a pay phone. Many villages have used the box to

house, a defibrillator; others have inventively turned them into informal book exchanges and information points. Some villages have been even more imaginative: the box in Standon has been transformed into a greenhouse full of colourful plants.



Hildersham book exchange

With Christmas in mind, the Society still has a limited supply of its book *The Hundred Parishes: an Introduction*. The 400-page hardback with 1000 photos is available for £25 from tourist information centres and good book shops, or from me – 01279 813226.

The Society's trustees wish you all a very happy Christmas. www.hundredparishes.org.uk
Ken McDonald, Secretary

Linton Gardening Club Diary

2020 has been a year that no one will forget in a hurry. For the Gardening Club, Covid-19 has meant cancelling many of our usual events and sadly we will not be holding this year's Christmas Social. Hopefully, with all the work that is being done to combat the virus, it will not be too long until we can re-start our meetings. Things may not have gone as planned this year but, from a gardening perspective, there have been positive things to come out of such negative times.



Spring snowdrops

Many people have discovered the pleasure and peace of mind that growing plants and spending time with nature can bring. The garden's circle of life has provided us two with some much needed enjoyment and continuity.

Like many others, we have been able to spend much more



Colourful crocuses

time than usual in the garden this year. We have sown more seeds, taken more cuttings and grown more plug plants, resulting in our front and back gardens and vegetable plot being full to bursting for much of the year. As this year's growing season ends, we are already making plans for 2021 and are looking forward to seeing our snowdrops, daffodils, crocuses and tulips flower in the next few months. Here's hoping that the many aspects of our lives that we have all missed so much this year will be back soon too. Best wishes to everyone for the Festive Season and 2021.

Jim and Helen, tel. 893577
lgcsecretary@yahoo.co.uk

POT POURRI 186

Pot Pourri 186 - What should the weights be?

FATHER Christmas could not deliver presents as it was too risky using the sleigh due to climate change. (Very little icy!) As all the presents weighed between one and 40 whole pounds, he decided to take them to the local Lapland Post Office. Here comes the problem - because the Post Office near Father Christmas was hardly ever used, they could only find four weights. However, as the presents all weighed in whole pounds, what should the weights be? Remember, each present weighs whole pounds only and they must be weighed exactly from 1 to 40 whole pounds. The Post Office has weighing pans - non digital.

Pot Pourri 185 - How Many people Attended?

36 people attended the meeting. If the number attending = x, then we have:
 $(x+1) + x + (x/2) + (x/4) = 100$ i.e. $x = 36$

District and County Councillor's report November 2020

A1307 Update

After protests by Parish Councils and Local Councillors there has been a U-turn on the decision to drop the plans for a lights-controlled crossing at Hildersham. The crossing is back on the table and work is going on to try and overcome the problem of land acquisition that was one of the reasons the crossing was in doubt. We hope that local landowners will help to make this much needed safe crossing of the A1307 possible.

(Another) GCP Consultation

The GCP will be consulting on their preferred new off-road route between the new travel hub and Cambridge. The consultation closes December 14th. The consultation documents can be seen online at - <https://consultcamb.org.uk/engagementhq.com/cset-eia>

Covid Community Grant

South Cambs has released a grant available for community groups supporting people with Covid related issues. There is £50,000 available and we will send around the details soon.

Resurfacing

The County Council have released the latest list of roads which have been selected for a light resurfacing. These are namely: Linton – Chalklands, Palmers Close & Finchams Close. Castle Camps – High Street. Shudy Camps – Parkway. West Wickham – Maypole Croft. Some good news for the areas that are benefiting from this work, which is currently planned for early December.

Covid Support

As we are now in another national lockdown, the councils are gearing up to assist communities where possible. We are in 'Patch 1' and the best contact for support at the District Council is Vicky Hoover – vicky.hoover@scambs.gov.uk

The best contact at the County Council will be the 'County Hub' which can be found on their website - <https://www.cambridgeshire.gov.uk/residents/coronavirus/covid-19-coordination-hub-your-community-needs-you>

New planning updates

The planning department at SCDC is introducing a new circular email to parish councils which details all of the new and currently live planning applications. Do feedback to John and Henry if you find this useful or equally if this is information overkill.

Social Housing Allocation Policy

SCDC are currently consulting of minor changes to the social housing allocation policy. The consultation is currently live and runs until December 18th. The info can be found here - <https://www.scambs.gov.uk/comment-on-proposed-changes-to-social-housing-allocation-policy/>

John and Henry Batchelor

A & R PLASTERING

All aspects of plastering undertaken:

Plasterboarding
Rendering
No job too small
30+ years experience
Free estimates

Tel: 01223890228
Mobile: 0774 8627920

Springfield House B&B

14/16 Horn Lane, Linton
Rivers View from:
bedrooms & guest lounge
01223 891383

www.springfieldhouselinton.com

DESIGNER DRAPES

Local Curtain &
Blind Specialist
01223 890556

Allstar Cleaning Ltd

Your Local, Professional, Carpet Cleaner Dean
11 years experience

Package to suit every level: Basic, Pet Treatment or Carpet Protector

£15 off for repeat customers

Free stain spotter for all customers

Contact Dean on 01223 654652

or info@allstarcleaning.me.uk to make an appointment.

Allstar Cleaning, 10 Coles Lane, Linton, CB21 4JS

14 Hillway, Linton, CB21 4JE.



MOBILE CHIROPRACTIC SERVICE

GCC-Registered Chiropractor

ALEXANDER M SMITH

01223 967565

SOUTH CAMBS AREA

(Based in Linton)

Effective care in the comfort of your home

- Low back pain & sciatica
- Neck pain & headaches
- Muscle spasm/tension
- Shoulder & Knee pain
- Postural problems

www.alexandersmithchiropractor.co.uk

GARDENER

N.C.H. QUALIFIED

All garden maintenance including:

- Weeding - Mowing
- Hedge cutting - Turfing
- Garden clearance
- Shed/fence treatment
- Hard/soft landscaping

For a friendly professional service please call:

Darryl Tilling
01223 892133
or
07932 021277



Ask Edward

Garden & Home
Routine Garden & Home
Maintenance
Gardens cleared, restored
& enhanced.
Year round garden
programmes available.
'No job too small'
For a free estimate &
friendly service,
Linton based, call
07768701010 or
Email:
edwards@edwards1984@gmail.com

Westlakes

Painting & Decorating

Les Westlake
(exterior only)

Mobile: 07929 501101

Tel: 01223 892866

Clive Westlake

07900 492127

Adam Westlake

07917 890752



Barn Owl Accommodation



www.barnowlaccommodation.co.uk
Call Suzanne on 07767 941188

STEVE WEBB

Painter & Decorator

Now upcycled furniture
painted to your
requirements

Excellent present ideas
Call for viewing details

Tel: 01223 893864

PSH Electrical Services

Rewires, New builds, Extra
lights, Extra sockets, Repair
works, Garden lighting,
Showers
Registered NIC EIC domestic
installer
email
pshelectrical27@gmail.com
telephone 07867980738

CHRISTOPHER MARKHAM

HOME & GARDEN SERVICES

Interior/Exterior Decorating
Fencing, Guttering
Turfing, Garden Clearance
Lawn & Hedge Cutting
Decking & Patio Cleaning
Patios & Driveways
Call on
(01223) 892889
or 07973 294946
No job too small...

Granta Medical Practices Update

WE continue to work hard to keep our patients as safe as possible, along with our staff and our community.

Patient access continues to be by invitation only, following a prior telephone assessment. If the assessing clinician feels it is clinically necessary to see you, they will arrange for you to come in and see them.

Essential care, such as NHS immunisations, blood tests, smear tests, and mother and baby checks, continues to go ahead at selected sites. We carry out temperature checks on both staff and patients to minimise risk. Patients must wear a mask if entering any of our buildings.

Coronavirus information changes rapidly. For the very latest news and guidance, please go to www.nhs.uk/conditions/coronavirus-covid-19/ and www.gov.uk/coronavirus

Repeat Prescriptions

Please make sure that you order your repeat prescriptions in a timely manner to ensure you are not without medication over the Christmas and New Year break.

You can treat many minor illnesses such as colds and coughs, sore throats, and upset stomachs easily at home. Make sure you keep stocked up with health care essentials such as pain relief (paracetamol), cough and sore throat remedies, a first aid kit, upset stomach treatment, rehydration treatment and heartburn / indigestion treatment. Having these essentials at home will not only save you time, and help you feel better quicker, but will also help save the NHS much needed resources.

Your local pharmacist can also offer you advice and guidance on the best treatment for you. Pharmacists are available on every high street and in supermarkets with many open evenings and weekends.

If you need urgent medical assistance when we are closed please use the NHS 111 service. If you have an emergency that poses an immediate threat to life, please ring 999.

For further information on alternative services, please go to our website www.grantamedicalpractices.co.uk

We wish you all a healthy and peaceful holiday season.

Sandra East, Granta Communications
sandra.east@nhs.net

Christmas at Linton Free Church

This year, Linton Free Church (on Horn Lane) is hosting the following Christmas activities, most of which are on Zoom. All are welcome to join. And look out for information about a Christmas treasure hunt around the village - more information will be out in December. Please check our website for details: www.lintonfreechurch.org.uk/christmas

- Christmas Lighthouse (Sunday 6th, 09:45am) - free activities for all primary aged Children, exploring the message of Christmas on Zoom.
- Christingle Celebration (Saturday 12th, 3pm) - a joyful celebration bringing families together. During the event, each person will take a Christingle (a specially decorated Orange) and light the candle to create a warm magical glow symbolising the light of Christ and his message of hope. A free Christingle bag containing everything for this session will be given to those signing up for this event.
- Cafe Church & Nativity (Sunday 20th, 10:30am) - every 3rd Sunday, the Free Church have a more informal and relaxed 'Cafe Service'. This December it will be combined with our virtual Nativity and is going to be super fun for everyone.
- Jellybeans Crib Service (Sunday 20th, 3pm) - Jellybeans are holding a Crib Service for all families with children under 5. We're currently planning for this to be held in the church buildings, but please check our website for further details nearer the time.
- Carol Service (Sunday 20th, 6:30pm) - join us as we journey through the Christmas story together using carols and Bible readings. As it's a virtual service this year there are some extra surprises with contributions from all ages of our community a couple of celebrity special guests. It's sure to prove fun for all the family and not to be missed!
- Midnight Communion (Thursday 24th, 11:30pm) - a quiet, reflective service, to see in Christmas together
- Christmas Day Celebration (Friday 25th, 10:30am) - join us as we celebrate Christmas as one big all age family. All are welcome.

Alistair Wood
Church Secretary

PLANNING APPLICATIONS

Plum - remove long low branch back to epicormic shoots ~1m from trunk - this heavy branch has dropped about 2m over the year and it appears to have a very weak attachment to the trunk. part of it's weight is being supported by an electricity cable. Tidy pruning stubs over path on opposite side of tree and reduce one (~3cm) branch (near these stubs over path) by about 1m (back into canopy)

122 High Street Linton CB21 4JT

Ref. No: 20/2324/TTCA | Validated: Fri 13 Nov 2020 | Status: Decided

Demolish existing porch and construct a single storey front and side extension with dormer windows also two storey and single storey rear extensions. Open for comment icon

84 Chalklands Linton Cambridgeshire CB21 4JH

Ref. No: 20/04629/HFUL | Validated: Mon 09 Nov 2020 | Status: Awaiting decision

Yew (T1) - fell because confirmed dead by tree surgeon and safety cannot be verified as concealed beneath Russian vine. Increased concern as adjacent to house. Apple (T2) - reduce crown by 2-3 metres, remove broken limbs and general prune. Work required to attempt to save very old tree following the loss of a major limb. Yew (T3) - lift crown to 2.5m to 3.0m. Maintenance work to maintain surrounding garden and reduce encroachment on adjacent trees and paths.

3 Horn Lane Linton CB21 4HT

Ref. No: 20/2290/TTCA | Validated: Tue 10 Nov 2020 | Status: Decided

Ash to reduce limb growing towards neighbouring house by 4-5m.

6 Church Lane Linton CB21 4JX

Ref. No: 20/2248/TTCA | Validated: Wed 11 Nov 2020 | Status: Decided

2523 Linton Air Cadets

WITH the announcement of the latest lockdown our training has remained virtual through October and November. Cadets continue to achieve and push forwards with the training syllabus with the support of virtual parade nights.

Ground school flight training for the award of blue wings has been on offer, along with a host of activities surrounding Remembrance Day. For the past two decades Linton has adopted the war memorial at RAF Castle Camps as well as parading through the village. This year has been different, with only a handful of representatives able to attend both Linton and Castle Camps memorial services. A special mention must go to Cadet Joseph Morris for a flawless performance of The Last Post at the Linton service.

Many remembrance events have taken place online including a history of RAF Castle Camps and why this memorial is so important to our local area. On Remembrance Sunday, cadets across the country took part in a doorstep salute instead of the usual large-scale parades we normally attend.

Face-to-face planning continues and we have taken a positive step towards reopening the squadron with Pilot Officer Keenan and myself completing officer training with the Adult Training Facility at RAF College Cranwell, helping to secure the future of the squadron. 2523 continue to parade virtually with a full programme as we await our return to face-to-face date; something that both cadets and staff are looking forward to.

Bradley Wright, Pilot Officer RAFAC, Training Officer
training.2523@rafac.mod.gov.uk

Linton advent window trail

'DON'T Be Afraid!'

These words were spoken several times in the Christmas story and the message is still relevant today.

Over the dark days of December, windows across the village will be lighting up with the Christmas story.

Join in this special advent calendar by loading the map and getting out each day to find the new window that has been 'opened'. You could, of course, discover a whole week's worth of windows on a weekend walk. More information on www.stmaryslinton.org.uk or the Facebook page.

Sarah Thorne
Children and
Families Minister
St Mary's Church

Winter events and activities from St. Mary's

FOLLOWING the successful virtual bake off and virtual garden show, the events committee of St Mary's Church Linton are holding several events over the winter period.

Christmas Tree Festival

Join our virtual Christmas Tree Festival. To enter decorate your Christmas tree, take a photograph and send it to events@stmaryslinton.org.uk along with your name. Please send your donation by bank transfer (St Marys Church Linton PCC, 20-17-19, 90389277) and put as your reference 'tree' and your name. Entries close Thursday 31st December.

Voting open Saturday 2nd to Sunday 10th January. To vote please make a donation as above and email us to let us know, then we will send you a voting form. There will be a small prize for the trees with the most votes.

Paper Quiz

Looking for something to keep you occupied in the dark evenings? Why not purchase our paper quiz. Copies are available from events@stmaryslinton.org.uk, Boswells Bakery and Sweet

Talk News. Cost £2. Entries close midnight Sunday 10th January. Answer as many questions as you can to be entered in the prize draw.

Children's Competition

Do your children enjoy arts and crafts? Why not enter our children's competition on the theme of Christmas Carols.

We are inviting children to enter a drawing, painting or collage on a piece of A4 paper, with your child's name and age, the name of the carol and a contact number on the back. Post entries through St Mary's Church letterbox by 10th January.

Judging will be in three age groups with a prize for each one. Entries will be displayed in the church after the closing date.

Virtual Quiz

Save the date Sunday 10th January at 3pm.

For further details on all events please see www.stmaryslinton.org.uk

Charlotte Ellis
Chair of St Mary's Events Committee

A J Pest Control Ltd

Local Professional Service
Member of NPTA
Domestic/Commercial/Agricultural
Experts in all areas of pest control



Mice, Rats, Wasps, Bees, Hornets, Moles, Moths, Ants, Bed Bugs, Fleas, Flies, Squirrels, Birds, Woodworm.

Tel: 01799 542 505 Mobile: 07855478824

E-mail: info@ajpestcontrol.com www.ajpestcontrol.co.uk

COOPER BARNES AUTOMOTIVE

£50
CASH BACK CAR
BODY REPAIR.

Insurance claims, bring your vehicle to a place convenient to you, not to your insurance company.

Call us for details and we will guide you through the simple process.

Service delivery to BS 10125 standard, independently evaluated by a competent third party certification body.

Approved repairers for major insurance and fleet companies.

Cooper Barnes Ltd
2 The Gnip Ind. Est
Linton, CB21 4XN
T: 01223 880603 E: repairs@cooperbarnes.co.uk W: www.cooperbarnes.co.uk

T&C'S APPLY

LINTON PAVING COMPANY

YOUR LOCAL LANDSCAPING
BLOCK PAVING & PATIO
SPECIALIST.
PROPERTY MAINTENANCE
Int/Ext Painting, General Repairs
FRIENDLY SERVICE.
FREE QUOTATIONS
Tel: Andre Jacobs

Mob: 07765 594398
Office: 01440 702498

Neil Claxton
Painting & Decorating
Interior/Exterior
Rooms Emulsioned
from £120
FREE ESTIMATES
Tel: 01223 893487
Mobile: 07724073045
E-mail: n.claxton925@btinternet.com

ProClean
'Your Complete Cleaning Solution'

- *Carpet Cleaning *Rugs *Stain Removal
- *Car Valeting *Caravans *Motor Homes
- *Upholstery Cleaning *Stain Protection
- *Floor Cleaning / Scrubbing / Sealing / Polishing
- *Pressure Washing of Patios Paths & Driveways
- *Domestic Cleaning * Top Ups & One Off Cleaning
- *Gutter / Fascia Cleaning

***Contract Office Cleaning (Flexible Options)**
TEL: 890433 Mob: 0777 375 8355
74 Bartlow Rd, Linton, Cambridge, CB21 4LY

THE 1:1 DIET
by Cambridge Weight Plan

NEW YEAR NEW YOU!

- ONE-TO-ONE SUPPORT
- FREE WEEKLY WEIGH-INS
- NO JOINING FEE
- STEPS TO SUIT YOUR LIFESTYLE

Contact your local Consultant:
Kim Davidson 07946 462790
email kimdavidson.cwp@outlook.com
facebook CWPwithKim instagram @one2onedietwithKim

De-Salis Wealth Management
Associate Partner Practice of St. James's Place Wealth Management

SPECIALIST ADVICE ON
Personal Financial Planning - Pension Planning
Investment Planning - Protection Planning

Ian Cross DipPFS
01223 892821
E-mail: ian.cross@sjpp.co.uk Website: www.de-saliswealth.co.uk
De-Salis House, 6 Hillway, Linton, Cambridge, CB21 4JE

The Partner Practice is an Appointed Representative of and represents only St. James's Place Wealth Management plc (which is authorised and regulated by the Financial Conduct Authority) for the purpose of advising solely on the group's wealth management products and services, more details of which are set out on the group's website www.sjp.co.uk/products. The 'St. James's Place Partnership' and the titles 'Partner' and 'Partner Practice' are marketing terms used to describe St. James's Place representatives

Neighbourhood Plan Progress

MANY thanks to all of you who filled in the questionnaire in October – we had 344 responses – the information will be useful to help the team ensure that the needs of the village are considered in any future development plans. So, what did the results show?

Housing: An immediate need for new housing was expressed by 8% of respondents in Linton and 4% in Hildersham. 28% of Linton households and 17% of Hildersham households replied to say that someone may want to move in the next five years, with needs for all types of homes mentioned (houses, flats/apartments, sheltered/retirement housing and homes providing extra care).

Traffic and Parking: 87% of Linton respondents and 79% of Hildersham respondents felt that traffic and parking in the village had got worse. 54% of Linton households and 46% of Hildersham households also thought that road safety for pedestrians and cyclists had got worse. The most common reasons for their responses were:

- Speeding through the villages
- Cars cutting through the villages to avoid the A1307
- Poor/illegal/inconsiderate parking – parking on pavements and too close to junctions, causing visibility issues and preventing pedestrians and the disabled using the pavement
- Cyclists not adhering to the Highway Code
- Pavements not well maintained
- Commuters using the village as a P&R
- No disabled parking available on the High Street

Suggestions for improvement included:

- Speed cameras/Speedwatch
- Better signage to existing car parks
- Lighting improvements (including at bus stops)
- Better/clearer crossing points
- Ensuring all future developments have off street parking that meets real needs, not an algorithm

Village Amenities: Most respondents from both villages were satisfied with the outdoor spaces, with suggested improvements including updating play equipment, outdoor exercise facilities for older residents, more seating required in the open spaces and a public lavatory on the Recreation Ground.

45% of respondents reported an increase in fumes and noise in both villages, with 38% reporting they had stayed the same and 16% unsure.

37% of respondents thought shops and services had improved, 46% that they had stayed the same and 12% that they have got worse.

Healthcare services were felt to have declined by 52% of respondents with 10% saying they had improved. The main areas of concern included:

- Remote surgeries being inaccessible for many residents (a corresponding need for public transport to Sawston was requested as well as the need to ensure that buses are able to access the whole village route and not just stop on the A1307)
- A lack of continuity in care
- Difficulty in getting appointments at the surgery. A small minority of respondents (2%) had had difficulty in getting a place for their child at a local school of their choice across all age ranges. 17% of respondents wanted either a half or full-size allotment (please don't forget to ensure you have registered your request with the Parish Clerks! Thank you).

If there is any data presented here that surprises you, or if you would like to be involved in the final stages of the Neighbourhood Plan, please get in touch through the Parish Office.

Cllr. Kate Kell

Waggon & Horses Licence Application Update

IT LOOKED like a routine licensing application, to bring closing time and outdoor facilities at the Waggon and Horses into line with those at other pubs in the village. The landlords, local residents, had stepped in at a time when pubs across the country were at risk, and had cut out the poor behaviour that had been getting the pub a bad name. In the event, it turned into a protracted and acrimonious storm lasting around five hours.

The root cause was the 2013 Live Music Act, of which most of us had never heard, which removed local authorities' power to regulate music in pubs as part of normal licensing procedures. Under the Act, restrictions on loud music can only be made under a licence "review", a legal term which requires a certificate from a senior police officer showing that the pub is a source of serious crime or disorder. In effect, the provisions of a licence issued just a few months ago, restricting music to indoors with closed windows, were invalid before they were written, and the landlords could do what they liked.

As indeed they have. Amplified music, loud enough to interfere with people watching television or even listening to music through headphones, thumps out each weekend – literally thumps, with incessant, driving bass – until 11pm. Animals are disturbed – the vet's surgery is just 50 yards away – and residents can forget about using their gardens. Any pause in the music is filled by a noisy generator, right beside a neighbour's wall. The proposal to extend seating and build a permanent marquee would also have doubled the capacity of the pub, while virtually eliminating its parking.

Neighbouring residents said that the poor behaviour had improved only slightly, and had mostly been moved away from the front of the pub to the adjoining, narrow Green Lane, with loud conversations and arguments in front of people's houses. One resident complained of an order for cocaine being placed on a mobile phone outside her window. The persistent disturbance, particularly over the three-day bank holiday weekend, had been so bad that two residents had put their houses on the market.

The vehemence and obvious justice of residents' complaints was such that even Green King's representative was moved to apologise, saying that this was not at all the way it wanted to behave towards its neighbours. Representing the Parish Council, I replied that we had no confidence whatsoever in such assurances, and that the residents could count on our full support. This is likely to include continuing co-operation with residents and the District Council in quickly identifying and tackling excessive noise, as deregulation does not bring with it a right to create nuisance.

Greene King's representative said that matters would be discussed in a spirit of goodwill, but this contrasted with the pub's refusal to turn down the noise when asked, and with its failure to provide any records of the monitoring they were supposed to carry out. They even tried to have the monitoring points moved away from the pub boundary, which would have allowed them to make even more noise. Greene King quoted a correspondent who said the pub was a good place for "a quiet drink". Its neighbours are entitled to peace and quiet too, and we need to help them get it.

Cllr. John Bald

STOP PRESS. The licensing sub-committee refused the application to extend drinking hours and to change the monitoring point for noise. It said that the application to erect a permanent marquee should be referred to district council planning committee, but noted that in its view such a development would be likely to add to public nuisance.

Cllr. John Bald

Planning Updates October 2020

LPC has regular meetings with Planning Officers, discussing material planning issues, village specific issues and general progress. We understand the pressures put upon Officers by developers and what assistance we can give to them, as submissions can be lengthy, detailed and complex.

Supplying Officers with accurate information is just one factor. Local knowledge and historic documents, as well as what we know from professional experience, all come into play – we have quite a range of all of these...

Planning Update:

Bartlow Road – pre-commencement work was stopped. Was there ever a pipe near the western edge that the developer says they were repairing? we think not... Other submissions and amendments conflict with each other or the original consents, so cannot be discharged.

Horseheath Road – building has started which might be premature. LPC will meet the developer next month to discuss progress, issues raised by residents at the site boundaries, etc. **24, Mill Lane** – The application was heard by SCDC Planning Committee, where residents and LPC presented their cases. It was refused mainly on grounds of materials; only industrial or farm buildings have metal roofs in this area and this is not a farmyard, but a house at the heart of our Conservation Area. We await the next application or amendment.

You might have noticed the loss of trees on the corner of Back Lane and Coles Lane. This relates to an application for infill houses, 20/04404/FUL, which is open for comments.

Meeting updates.

Webinar meetings attended for Suffolk Local Development Plan (LDP), who intend to build 800 new houses a year for 20 years. Think of the impact upon our area and the A1307... Then the "call for sites" for housing in the South Cambs and City LDP. These both require public input, so do send comments when consultation begins.

CSET meeting, 15th October. GCP and Mott MacDonald, Parish Councillors from Linton (Kate Kell, Enid Bald), Horseheath, Abingtons, Bartlow, etc. DC/CC Henry Batchelor. See report on website. Called following A1307 Villages Forum joint letter to GCP against Phase 1 proposals.

Hildersham Crossroads – The signalled crossing is now restored to the scheme; safety for cyclists and pedestrians would affect use of the Greenway. The positive benefits of the Linton High Street lights was described – these far outweigh the slight delays to A1307 traffic.

GreenWay routes through Abington to be reviewed following revised government guidance and strong local opposition. The route to Linton could see the removal of the layby.

West bound bus lane – (Bartlow Road to the Grip). Following strong opposition this is now on hold. The Executive Board had based their decision on faulty data on cost effectiveness, use (3 buses, each week day) time saved (34 minutes – really?). The loss of trees, effect on landscape and cost (£1.03 million) were just a few of the issues raised against the scheme.

Linton Travel Hub – This is part of traffic management schemes including reducing P+R use of the High Street. Parking and traffic issues can now be informed by the Parking Needs Survey **The Granta** – Following the pollution incident, we have had rain, which should remove the deposits that smother plants, crustaceans (including rare native crayfish – not for us to eat!) and larvae (for the fish to eat!).

The Mill races and channels have been restored by owners of Mill House and The Beeches. Further work in this area and on the floodplain is being investigated.

Cllr. Enid Bald

Bentens

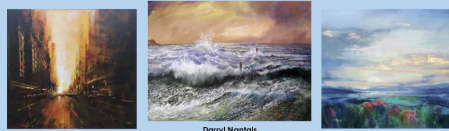
Accountants and Tax Advisors

Abbey House, 51 High Street
Saffron Walden

01799 523053 www.bentens.co.uk

The Darryl Nantais Gallery

Fine Art, Framing & Restoration



We offer a wide selection of artwork, contemporary & traditional, local & international, including paintings, prints, ceramics, glassware, sculptures & jewellery. The Gallery also offers bespoke framing, picture restoration and cleaning.

59 High Street, Linton, Cambridgeshire CB21 4HS

01223 891289 - www.linton59.co.uk

Find, follow & like us on Facebook & Instagram for regular news updates

Tuesday to Saturday 10am to 4pm

Children, Birds, and Books

An exhibition of prints, paintings, and mosaic by

Jim Anderson

Recent winner in BBC1's *Home Is Where The Art Is*

Gallery Above

94 High Street, Linton, Cambs. CB21 4JT 01223 894 899

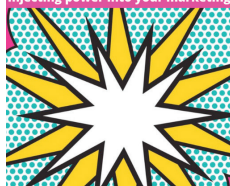
Opening Hours: 10.30am until 6pm

Wednesdays to Fridays

Saturdays 10.30am until 2.00pm

BRICK MARKETING

Injecting power into your marketing



brick-marketing.co.uk

hello@brick-marketing.co.uk



Cambridge Art Makers

A friendly and inspiring workshop and studio. Expert tutors offering a diverse array of dynamic, engaging creative courses.



Make time for Making! Claim your creativity it's good for you!

6 Lintech Court, Linton

www.cambridgemakers.org

sqcarsales.co.uk

for service & quality

SQ Car Sales

Quality used cars

t: 01223 778 448 m: 07908 128 164

G. DYE & SONS

GENERAL BUILDERS, GROUNDWORK & MAINTENANCE, CONSERVATORIES & UPVC WINDOWS, KITCHEN & BATHROOM REFITS

Also interior & exterior decorating REFERENCES AVAILABLE

For enquiries please call

Mobile:

07961 342887

Tel: 01223 892089

georgedye738@btconnect.com



Free Estimates

Parish Council Minutes

Parish Council Matters is written, edited and published by the Parish Council with the support of the Linton News Team.

ABBREVIATED Minutes of the Meeting of Linton Parish Council held on Thursday 15th October 2020 at 7.30pm via Remote meeting via video/telephone conferencing.

Apologies for Absence. Apologies received from Cllr Merrie Mannassi, Chairman responsibility was delegated to Cllr John Bald. Apologies received from Cllr Paul Poulter. No apologies received from Cllr Sharron Parker.

Councillors' Declarations of Interest: None

Councillor Vacancies; There are now four vacancies for Co-option

Chairman's Comment; Cllr John Bald thanked Cllr Merrie Mannassi and Cllr Enid Bald for their participation in the bulb planting throughout the village on Saturday 3rd October 2020. He also thanked all concerned for the production and distribution of the Neighbourhood Plan surveys to all households. Also, for the production and distribution of the Traffic Survey and Kingfisher Walk letter. A tremendous effort by all involved including volunteers from the LCHT.

Open Forum for Public Participation: One resident raised serious safety concerns regarding the change of use to an outside seating area for The Linton Kitchen on the Market Square. A full statement which was read out at the meeting, is available upon request from the Parish Council office.

One resident raised concerns regarding the difficulty of parking on the High Street and requested consideration for Residential Parking Permits. A full statement, which was read out at the meeting, is available upon request from the Parish Council. Cllr John Bald expressed his understanding of the concerns and explained that this is being given priority by the Parish Council.

Consideration of the minutes of the Council meeting held on the 17th September 2020. Cllr Lee Gardner proposed, Cllr Simon Hill seconded. All Agreed.

Matters Arising/Clerk's Report.

Consideration of a donation amount to the Royal British Legion for the Poppy Appeal. Cllr John Bald proposed a donation of £100.00. Cllr Enid Bald seconded. All Agreed. Remembrance Sunday invitation to attend wreath laying at the War Memorial on Sunday 8th November 2020.

Clerk updated the council with the imminent arrival of a new picnic bench on the Recreation Ground and two new benches for the Cemetery.

Planning Matters.

Bartlow Road.

Verbal update from Councillor Enid Bald. Pre-consent development work has been stopped. Work was started installing drainage pipes before conditions were discharged. The developer claimed that the work being carried out was repairs to existing pipes, however LPC in conjunction with CN Historic have documents with evidence that there were no pipes on the Bartlow Road site.

Horseheath Road.

Cllr Enid Bald gave a verbal update. LPC continue to receive discharge of conditions applications. It is possible that construction work has begun prior to discharge of conditions, as reported by a resident. Planning Enforcement have been informed.

1 Horseheath Road.

Councillor Enid Bald. Cllr Enid Bald advised that the Planning Decisions connected to Horseheath Road are going to be used as evidence by Fewes Lane Consortium.

Paynes Meadow.

Councillor Enid Bald. Cllr Enid Bald advised the council that written representation has been submitted to the Planning Inspectorate.

Haverhill Echo request for comments on proposed development sites in South Cambridgeshire. Cllr John Bald stated that the possible scale of development was of great concern to the Linton Parish Council firstly for the water supply, secondly the loss of valued landscape and the increase in traffic.

Co-op Loading Bay relocation.

Clerk was advised by the council to ask SCDC for their views on how to address the problem and state the continuing concerns about safety.

Consideration of the District and County Councillors Report for October 2020. In addition to the written report County & District Cllr Henry Bachelor added that the current Highways Officer is moving on and that a new one would be taking her place in due course. Also, that the Stagecoach 13 service was adding extra times to the route and there would now be buses every ten minutes through the rush hour periods. District Councillor John Bachelor spoke on the issues of parking in the district and stated that the underlying problem is that there is a lack of enforcement. SCDC is discussing taking on responsibility for enforcing parking restrictions and regulation.

Two members of the public were invited to speak at this point of the meeting regarding the cycleway lighting. The residents expressed concern regarding the lighting to be installed between Stantons and Linton Village College on the cycle way. The second parishioner stated that were broadly in favour of the proposal but would like to maintain access to the path. Cllr Kate Kell advised that it was her understanding that the cycleway was not due to be lit from above. The intention was to install ground level reflective lighting, like cats-eyes and cyclists at night would be expected to have lights. Cllr Kate Kell assured the parishioner that she will monitor the situation going forward and continue to express the views of the residents.

Finance

Consideration of the Finance minutes of the meeting of the 10th September 2020 Available on the councillor portal on the website. Noted.

SCDC Business rates on the Bowling Green on the Recreation Ground now reclassified with a Land Exemption, however, should the area be used in the future it would be subject to rates.

Consideration of quotations received.

Quotation received from Herts & Cambs Ground Maintenance to cut and mulch large areas of Leadwell Meadows. Herts & Cambs have quoted to cut and mulch the area, collecting the cuttings into one corner and allow to naturally compost.

Cllr Brian Cox proposed that the quote be accepted. Cllr Chris Hine seconded. All Agreed.

Traffic.

A parishioner complaint regarding parking and speeding issues on Coles Lane. The Parish Council stressed that it is sympathetic to the resident's concerns. Issues regarding illegal parking and speeding should be reported to the Police on 101.

Some additional traffic issues are hoped to be addressed with the Linton Parish Council's improvements sought through the Local Highways Improvement Initiative submitted at the end of September 2020. The poor condition of the pavement to be reported to SCDC by the office and the resident.

Review the agreement with The Linton Kitchen regarding use of the Market Square for outside seating as of the end of October. Following lengthy discussion and consideration of complaints from residents regarding; safety, traffic and parking issues, Cllr Lee Gardner proposed that the agreement due to be reviewed at the end of October 2020 be withdrawn on 31st October and that the Linton Kitchen be asked to consider ceasing use of the area before this date due to the severity of parishioner's safety concerns. This in conjunction with complaints about the withdrawal of public parking facilities were considered by the council. The LPC would like to offer the continued use of the cobbled area on the opposite side of the road, adjacent to the telephone box for the duration of two months, until the end of December 2020 or until the new bench proposed for this site is installed, whichever is sooner. Cllr Brian Cox seconded. Voted 7 in favour, 1 abstention. Agreed.

Traffic and Parking.

Cllr Kate Kell updated the Council that questionnaires had been distributed to properties on the bus route for clarification from parishioners of what is needed in the village for GCP. If there is positive feeling for Resident Permit Only parking, then a village wide survey will be carried out. A follow up meeting with GCP was held and the Hildersham signalised junction has been re-added to the agenda. The West bound bus lane proposal has currently been put on hold, the LPC concerns regarding cost and ecology issues are being strongly considered and the GCP have agreed to re-think. At the present time the Hub at Bartlow Road is not being taken forward, however it has been noted that the hub is part of a wider solution to the parking issues in the village. GCP are looking forward to the results of the Parking survey. Cllr Enid Bald added that the GCP are now aware that the minor highways requests, the parking hub, and the removal of the condition of parking facilities at the dentist are all part of one package. The Linton Village College had a formal agreement with LPC that groups using the Recreation Ground could park on the LVC land, which needs clarifying. Loss of use would cause huge problems for activities taking place on the Recreation Ground. The council need to raise this issue in writing to LVC.

LHI Submission. Cllr Enid Bald advised that the LHI initiative was completed and submitted on 25th September 2020.

Trees, Biodiversity, River Care and Wildlife.

River and Flood Plain update. Verbal Update from Cllr Enid Bald. The pollution event of last week where waste from works on Back Road were discharged into the River Granta were discussed. Due to the low flow of the river this has an enhanced negative effect on the riverbed. Cllr Enid Bald requested the Clerk contact the Cambridgeshire County Council Rights of Way Officer regarding the flooding in the area of Rivey Hill.

Premises Licence Variation Application

SCDC Application received for variation to Premises Licence from The Waggon & Horses.

Cllr John Bald proposed that the council object to the extension of the hours on the basis that there have been considerable complaints from residents. Cllr Lee Gardner seconded. Six in favour, one against.

Agreed.

The Meadow Recreation Ground

Cllr John Bald updated that the LPC had received an offer from a former resident who would like to, on a pro-bono basis, put something back into the village. He has sent a detailed proposal which has just been received. Cllr John Bald asked for the item to be raised in the November meeting along with further discussion regarding play equipment.

Linton News

Three articles required for Linton News – December Edition. Cllr John Bald agreed to complete an article on the role of the Parish Council. Cllr Enid Bald will complete regular reports. Cllr Kate Kell, Neighbourhood Plan update and also add contact details for Speedwatch.

Full Minutes are available on the website.

Clerk.

The Village Hall, Coles Lane, Linton,
 Cambridge CB21 4JS Tel: 891001
Clerk to the council – Mrs Jenny Seaward
Email: enquiries@linton-pc.gov.uk
Website: www.lintoncambridgeshire-pc.gov.uk
Facebook: www.facebook.com/lintonpc
Office open: Monday, Tuesday, Wednesday and Friday 9am – 12noon. Closed on a Thursday.
 Full Council meetings are held at the Cathodeon Centre, commencing at 7.30pm on the third Thursday of the month, except for August.

ADMIRAL ESTATES

Residential Sales and Lettings

- Local Linton Office
- Cambridge Office
- Specialists: Linton & Local Villages
- 20 Years Experience

Do You Need Help With Your Property?

Call us Now: 01223 891227

www.admiralestates/linton



Working with Terry Waite & Emmaus Cambridge

ClearTax

Quality, friendly accounting services and taxation advice.

Sole trader and small company specialist.

Free initial consultation

The Granary,
 Yews Farm Yard, Hadstock

t: 01223 894036
 e: janine@cleartax.co.uk
 www.cleartax.co.uk

Singing Lessons

Sarah Rosewell
BA (Hons) Music

Individual singing lessons available for all ages and abilities

Whether towards exams or purely for pleasure

- * CRB Checked
- * Based in Linton

For more information contact:

Sarah on 01223 894861

Email: sarahrosewell@hotmail.com

KJL Roofing

All roofing repairs, leadwork, renewal of pitched or flat roofs

New guttering, repairs/unblocking
 Free estimates before any work commenced

25 years + Experience
 Tel: 01223 892542
 Mob: 07958 618440

A TOUCH OF NAILS

GELISH MANICURES & PEDICURES
 PERFORMS LIKE A GEL APPLIES LIKE A POLISH

Call Michelle on
 07866 017 801
 supcuk@talktalk.net
 HORSEHEATH

BED & BREAKFAST

Mrs Monica Clarkson
 4 Harefield Rise, Linton
 Tel: 01223 892988
 Quiet modern bungalow
 Families welcome
 No Smoking



Hand stretched Neapolitan style pizzas using fresh locally sourced ingredients. Available for private hire and party bookings. Deliveries are available.

Friday and Saturday, Wheatsheaf Way, Linton, CB21 4XB
 Monday, The Bell Inn car park in Balsham, CB21 4DZ
 07583187560

lolspizzas@gmail.com

Follow @lolspizza on Facebook and Instagram



**ALL TYPES OF BLINDS
 SUPPLIED AND FITTED
 FREE QUOTATIONS
 FREE HOME VISIT
 01223-894020**

or email colin@capriblinds.co.uk
 ALL BLINDS ARE MADE IN ENGLAND
 - FAST LOCAL SERVICE
Visit capriblinds.co.uk

GLENWOOD BOLTS & SCREWS LTD

www.glenwoodbolts.co.uk



**SUPPLIERS OF QUALITY
 FASTENERS, FIXINGS &
 SILVERLINE TOOLS**

Unit 2 Intech Court
 The Grip Industrial Estate, Linton
 Cambridge, CB21 4XN
 Tel: 01223 892095 / 893931
 Fax: 01223 894122

NRS CARPETS



**HOME SELECTION
 FREE MEASURING &
 ESTIMATING**

All types of flooring available

Tel: 01223 893634
 Mobile: 07885 173113